

# EntraPass™ Special Edition

## Highly Reliable Single Workstation Access Control System

### Network Ready

The EntraPass Special Edition system architecture supports connections to remote sites using TCP/IP protocol (communication servers) and dial-up modems.

### Express Setup for Quicker Installations

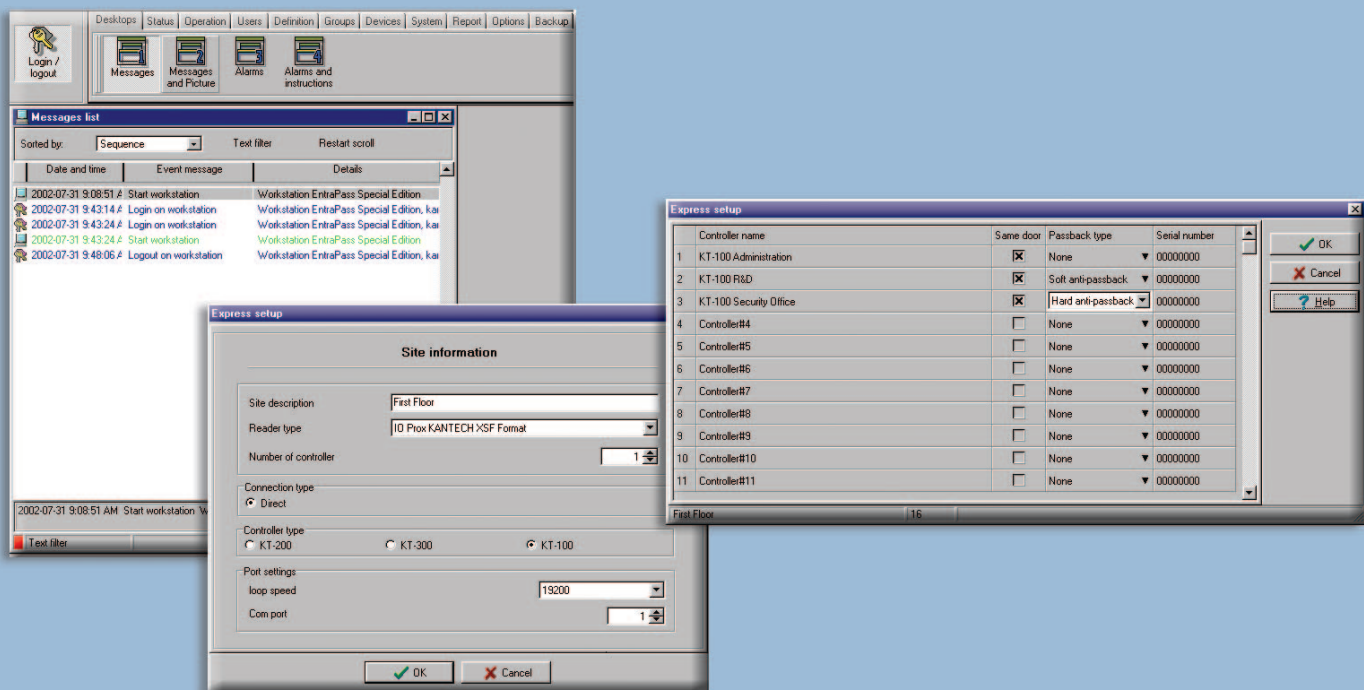
Simply use the Express Setup utility, which automatically configures sites, type of readers, connection type, number of loops, number of controllers on a loop, etc. It prevents setup errors and tests hardware and wiring before you customize a site.

### Simple to Upgrade and Expand

EntraPass SE controls up to 128 doors and easily expands to accommodate an unlimited number of users. The software is compatible with Kantech's complete line of door controllers, allowing complete system flexibility and improved user interfaces.

### Operator Friendly

Based on user privileges, operators can define or modify parameters (i.e., schedules or access levels), generate reports, or activate controlled devices (i.e., locking/unlocking doors, or activating relays for lighting or air conditioning). Plus with the embedded Vocabulary Editor, users can program the system in English, French, or Spanish in addition to translating operations into almost 100 different languages.



## EntraPass™ Special Edition

EntraPass Special Edition doesn't just pass the test, it exceeds the parameters for high performance and reliability demanded by users of access control and integrated security systems. Easy to use, easy to install, EntraPass Special Edition provides single workstation access control you can trust.

### System Features

- E-mailing Reports Capability
- Expands to accommodate an unlimited number of users
- Controls up to 128 doors
- Express Setup
- Multilingual operation
- Elevator Control
- Integrated Badging
- Remote Site Management
- Integrates easily with external alarm systems
- Visual diagnostics
- Automatic backup
- Time & Attendance reporting

### Computer Requirements

- Minimum processor .....Pentium III 800MHz
- Minimum RAM recommended .....128MB
- Minimum free hard disk space required for software .....4GB
- Minimum screen resolution and video card memory .....800 x 600 (256 colors)
- Operating system compatibility .....Windows 98/XP/NT/2000

### Ordering Information

#### Software Package

**E-SPE-EN:** License for EntraPass Special Edition Software English version including: elevator control, integrated badging and remote site management. Also includes English Reference Manual and CBLK-10 cable kit.

**E-SPE-SP:** Same as E-SPE-EN with Spanish Reference Manual.

**E-SPE-FR:** Same as E-SPE-EN with French Reference Manual.

**E-SPE-MAN-EN:** English Reference Manual

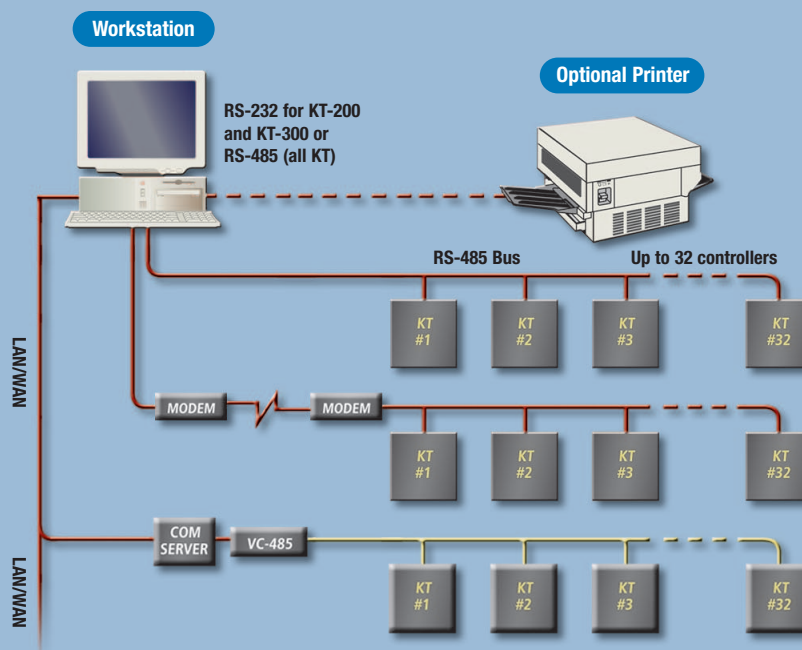
**E-SPE-MAN-SP:** Spanish Reference Manual

**E-SPE-MAN-FR:** French Reference Manual

### System Capacities

- Cards.....Unlimited
- Number of cards per controller stand-alone mode .....6,000 (KT-100) .....3,000 (KT-200) .....8,000 (KT-300/128K) .....56,000 (KT-300/512K)
- Card families or site code.....Unlimited
- Number of sites.....Up to 64 (Max. 64 controller)
- Door controllers per site.....32
- Card readers/Keypads.....128 per system
- Monitored points (input).....512 per site
- Card user access levels.....250 per site
- Access level combinations.....Unlimited
- Schedules of 4 time zones each.....100
- Holidays.....366 per system
- Holiday types.....4
- System operator passwords.....Unlimited
- Operator security levels.....Unlimited
- Concurrent operator languages.....2
- Number of printers.....1 log printer .....1 report printer

### System Architecture



### Converter:

VC-485: RS-232 to RS-485  
 USB-485: USB to RS-485

- **MAXIMUM: 64** controllers per system
- **MAXIMUM: 32** controllers per loop